



ASFA-L (7 mm) Hose Clamp

The ASFA L7 is the smallest worm-drive hose clamp in the Mikalor range and, dare we say it, in the world. This clamp has been developed for use in applications where a standard clamp cannot be used due to a shortage of space. It is manufactured using the same technology and production processes as the current 9mm and 12mm ASFA ranges and is subject to the standards and quality controls specified by ISO 9001 and IATF 16949.

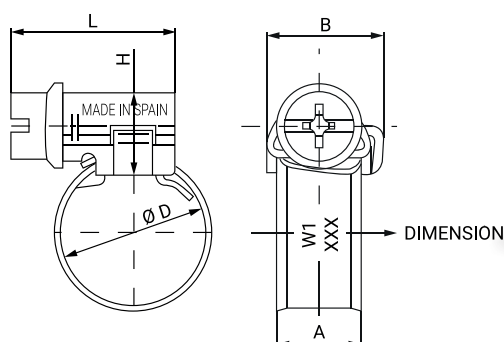
As this is a very compact clamp, we have had to adapt the housing and screw in order to reach a clamping force of up to 1.5Nm. This clamping force ensures total leaktightness. The 6mm cylindrical screw, manufactured by Mikalor exclusively for the L7 clamp, means that there is no need for an excessive and unnecessary application of torque.

The ASFA L7 can be used in many different applications and sectors: commercial vehicles, passenger vehicles, infrastructure, ventilation, fuel lines, white goods, etc.

ØD Application	Part Number	L +1 -0.5	H Max.	B Max.	A ±0.3	Max. Pressure (BAR)	Max. Torque (Nm)	Box Quantity	Outer Box Quantity
03008745	8-12	18,5	9,2	11,5	7	15	1,5	200	1.600
03008746	10-16	18,5	9,2	11,5	7	15	1,5	200	800
03008747	12-22	18,5	9,2	11,5	7	15	1,5	200	800
03008748	16-27	18,5	9,2	11,5	7	15	1,5	200	800
03008749	20-32	18,5	9,2	11,5	7	15	1,5	200	800
03008750	25-40	18,5	9,2	11,5	7	15	1,5	100	400

**It is recommended to work at 75 % of the maximum values specified in the table.*

TECHNICAL INFORMATION	
MATERIAL	BELT AND HEAD: STEEL W1 (DIN 1.0935) SCREW: STEEL QST 36-3 (DIN 1.0213)
FINISH	GALVANIZED
CORROSION RESISTANCE	144 HOURS SALT SPRAY (ASTM B-117)
MAXIMUM TIGHTENING SPEED (RPM)	150 ±5



ASFA-L (7 mm) Hose Clamp W2 AISI - 430 Stainless steel



The ASFA L7 is the smallest worm-drive hose clamp in the Mikalor range and, dare we say it, in the world. This clamp has been developed for use in applications where a standard clamp cannot be used due to a shortage of space. It is manufactured using the same technology and production processes as the current 9mm and 12mm ASFA ranges and is subject to the standards and quality controls specified by ISO 9001 and IATF 16949.

As this is a very compact clamp, we have had to adapt the housing and screw in order to reach a clamping force of up to 1.5Nm. This clamping force ensures total leaktightness. The 6mm cylindrical screw, manufactured by Mikalor exclusively for the L7 clamp, means that there is no need for an excessive and unnecessary application of torque.

The ASFA L7 can be used in many different applications and sectors: commercial vehicles, passenger vehicles, infrastructure, ventilation, fuel lines, white goods, etc.

ØD Application	Part Number	L +1 -0.5	H Max.	B Max.	A ±0.3	Max. Pressure (BAR)	Max. Torque (Nm)	Box Quantity	Outer Box Quantity
03016508	8-12	18,5	9,2	11,5	7	15	1,5	200	1.600
03016509	10-16	18,5	9,2	11,5	7	15	1,5	200	800
03016510	12-22	18,5	9,2	11,5	7	15	1,5	200	800
03016511	16-27	18,5	9,2	11,5	7	15	1,5	200	800
03016512	20-32	18,5	9,2	11,5	7	15	1,5	200	800
03016513	25-40	18,5	9,2	11,5	7	15	1,5	100	400

**It is recommended to work at 75 % of the maximum values specified in the table.*

TECHNICAL INFORMATION	
MATERIAL	BAND AND HEAD: STAINLESS STEEL X6CR17 W2 AISI 430 (DIN 1.4016) SCREW: STEEL QST 16-3 (DIN 1.0213)
FINISH	GALVANIZED
CORROSION RESISTANCE	72 HOURS SALT SPRAY (ASTM B-117)
MAXIMUM TIGHTENING SPEED (RPM)	150 ±5

