

Stainless Steel W3 ASFA High Torque Hose Clamp



W3

Mikalor High-Torque Clamps were designed to guarantee maximum performance in the most demanding applications.

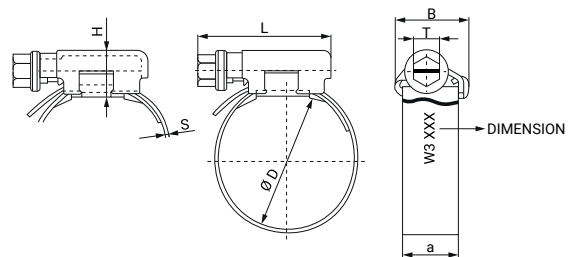
Thanks to the use of an M8 screw and the choice of 16mm bandwidth, torque values can be applied which are far higher than those used with the standard ASFA range, thereby ensuring perfect performance in high-pressure applications. The High-Torque clamp is particularly popular in industrial and automotive applications due to its outstanding performance. The perfectly rounded bevelled band edges avoid the clamp cutting into or damaging the hose.

*** The maximum application pressure can vary depending on the type of hose used and the geometry of the coupling.**

Ø Application	Part Number	A +0.3 -0.2	L +1 -0.5	S ±0.1	H Max.	B Max.	T	Maximum values		Box Quantity	Outer Box Quantity
								Pressure (Bar)	Par (Nm)		
25-45	03066001	16	40	0,85	14	22	8	55	14	50	50
32-54	03066002	16	40	0,85	14	22	8	50	14	50	50
45-67	03066003	16	40	0,85	14	22	8	45	14	50	50
57-79	03066004	16	40	0,85	14	22	8	40	14	50	50
70-92	03066005	16	40	0,85	14	22	8	30	14	50	50
83-105	03066006	16	40	0,85	14	22	8	20	14	25	25
95-118	03066007	16	40	0,85	14	22	8	17	14	25	25
108-130	03066008	16	40	0,85	14	22	8	14	14	25	25
121-143	03066009	16	40	0,85	14	22	8	11	14	25	25
133-156	03066010	16	40	0,85	14	22	8	8	14	25	25
146-168	03066011	16	40	0,85	14	22	8	6	14	25	25
159-181	03066012	16	40	0,85	14	22	8	5	14	25	25
172-194	03066013	16	40	0,85	14	22	8	4	14	25	25
184-206	03066014	16	40	0,85	14	22	8	3	14	25	25
197-219	03066015	16	40	0,85	14	22	8	2	14	25	25
210-232	03066016	16	40	0,85	14	22	8	2	14	25	25

*** It is recommended to apply 75% of the maximum values contained in the table.**

TECHNICAL INFORMATION	
MATERIAL	STAINLESS STEEL BAND AND HOUSING W3 AISI 430 X6Cr17 (DIN 1.4016) STAINLESS STEEL W4 AISI 304 Cu SCREW
FINISH	STAINLESS STEEL
CORROSION RESISTANCE	200 HOURS SALT SPRAY (ASTM B-117)
MAXIMUM TIGHTENING SPEED (RPM)	540 ± 5



Stainless Steel W4 ASFA High Torque Hose Clamp



W4

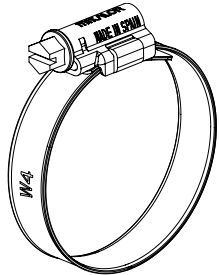
Mikalor High-Torque Clamps were designed to guarantee maximum performance in the most demanding applications.

Thanks to the use of an M8 screw and the choice of 16mm bandwidth, torque values can be applied which are far higher than those used with the standard ASFA range, thereby ensuring perfect performance in high-pressure applications. The High-Torque clamp is particularly popular in industrial and automotive applications due to its outstanding performance. The perfectly rounded bevelled band edges avoid the clamp cutting into or damaging the hose.

*** The maximum application pressure can vary depending on the type of hose used and the geometry of the coupling.**

Ø Application	Part Number	A +0.3 -0.2	L +1 -0.5	S ±0.1	H Max.	B Max.	T	Maximum values		Box Quantity	Outer Box Quantity
								Pressure (Bar)	Par (Nm)		
25-45	03067001	16	40	0,8	14	22	8	55	14	50	200
32-54	03067002	16	40	0,8	14	22	8	50	14	50	200
45-67	03067003	16	40	0,8	14	22	8	45	14	50	50
57-79	03067004	16	40	0,8	14	22	8	40	14	50	50
70-92	03067005	16	40	0,8	14	22	8	30	14	50	50
83-105	03067006	16	40	0,8	14	22	8	20	14	25	25
95-118	03067007	16	40	0,8	14	22	8	17	14	25	25
108-130	03067008	16	40	0,8	14	22	8	14	14	25	25
121-143	03067009	16	40	0,8	14	22	8	11	14	25	25
133-156	03067010	16	40	0,8	14	22	8	8	14	25	25
146-168	03067011	16	40	0,8	14	22	8	6	14	25	25
159-181	03067012	16	40	0,8	14	22	8	5	14	25	25
172-194	03067013	16	40	0,8	14	22	8	4	14	25	25
184-206	03067014	16	40	0,8	14	22	8	3	14	25	25
197-219	03067015	16	40	0,8	14	22	8	2	14	25	25
210-232	03067016	16	40	0,8	14	22	8	2	14	25	25

*** It is recommended to apply 75% of the maximum values contained in the table.**

TECHNICAL INFORMATION	
	MATERIAL STAINLESS STEEL BAND AND HOUSING W4 AISI 304 X6Cr Ni 18/10 (DIN 1.4301) STAINLESS STEEL W4 AISI 304 Cu SCREW
	FINISH STAINLESS STEEL
	CORROSION RESISTANCE 400 HOURS SALT SPRAY (ASTM B-117)
	MAXIMUM TIGHTENING SPEED (RPM) 540 ± 5

