

One ear clip with inner ring

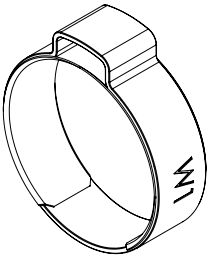


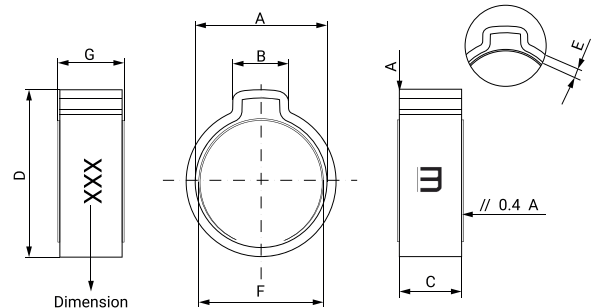
W1

The fact that these clamps are used on very small-bore hoses means that the material of the tube or hose can sometimes be very flexible, making it more difficult to ensure a leaktight assembly due to the possible deformation of the hose.

In these cases, the inner-ring is key in helping to guarantee leaktightness as well as protecting the hose from being pinched during assembly.

Ø Application	Part Number	A ±0.2	B ±0.2	C ±0.2	D +0.5 -0.2	E +0.1 -0.02	F ±0.2	G ±0.2	Max. Pressure (Bar)	Box Quantity	Outer Box Quantity
7,5-8,5	23012300	9,3	5,5	6,0	12,8	8,8	7,8	0,6	27	2.000	8.000
8,2-9,5	23012319	10,3	6,0	6,0	13,8	9,8	7,8	0,8	27	1.000	8.000
9,0-10,5	23012327	11,3	6,5	6,5	14,8	10,8	7,8	0,8	27	1.000	8.000
10,0-11,5	23012335	12,3	7,0	6,5	15,8	11,8	7,8	0,8	27	500	8.000
10,5-12,5	23012343	13,3	7,5	6,5	16,8	12,8	7,8	0,9	27	500	8.000
11,5-13,5	23012351	14,3	8,0	7,0	18,5	13,8	7,8	0,9	22	500	4.000
12,5-14,5	23012360	15,3	8,0	7,0	19,5	14,8	8,8	1,0	22	500	4.000
13,0-15,3	23012378	16,3	8,5	7,0	20,3	15,8	8,8	1,0	22	500	2.000
14,0-16,3	23012386	17,5	9,0	7,0	22,0	17,0	8,8	1,0	18	250	4.000
15,0-17,3	23012394	18,5	9,5	7,0	22,8	18,0	8,8	1,0	18	250	4.000
16,0-18,3	23012407	19,5	9,5	7,5	24,0	19,0	9,8	1,0	18	250	2.000
17,0-19,3	23012415	20,5	10,0	7,5	25,0	20,0	9,8	1,0	18	250	2.000

TECHNICAL INFORMATION	
	MATERIAL STEEL W1 DC04 (EN 10130) STAINLESS STEEL INNER-RING AISI 301
	FINISH ZINC-PLATED Cr3
	CORROSION RESISTANCE 72 HOURS / INNER-RING 250 HOURS SALT SPRAY (ASTM B-117)





W4

Stainless Steel One Ear Clip with stainless steel inner-ring

The fact that this clamp is manufactured in full AISI-304 stainless steel makes it ideal for use in marine or foodstuff applications as the corrosion resistance is outstanding.

The inner-ring means that the clamp fits snugly around the hose, while the bevelled edges protect the hose from being pinched during fitting and ensure a durable leaktight assembly.

Ø Application	Part Number	A ±0.2	B ±0.2	C ±0.2	D +0.5 -0.2	E +0.1 -0.02	F ±0.2	G ±0.2	Max. Pressure (Bar)	Box Quantity	Outer Box Quantity
7,5-8,5	23012300	9,3	5,5	6,0	12,8	8,8	7,8	0,6	27	2.000	8.000
8,2-9,5	23012319	10,3	6,0	6,0	13,8	9,8	7,8	0,8	27	1.000	8.000
9,0-10,5	23012327	11,3	6,5	6,5	14,8	10,8	7,8	0,8	27	1.000	8.000
10,0-11,5	23012335	12,3	7,0	6,5	15,8	11,8	7,8	0,8	27	500	8.000
10,5-12,5	23012343	13,3	7,5	6,5	16,8	12,8	7,8	0,9	27	500	8.000
11,5-13,5	23012351	14,3	8,0	7,0	18,5	13,8	7,8	0,9	22	500	4.000
12,5-14,5	23012360	15,3	8,0	7,0	19,5	14,8	8,8	1,0	22	500	4.000
13,0-15,3	23012378	16,3	8,5	7,0	20,3	15,8	8,8	1,0	22	500	2.000
14,0-16,3	23012386	17,5	9,0	7,0	22,0	17,0	8,8	1,0	18	250	4.000
15,0-17,3	23012394	18,5	9,5	7,0	22,8	18,0	8,8	1,0	18	250	4.000
16,0-18,3	23012407	19,5	9,5	7,5	24,0	19,0	9,8	1,0	18	250	2.000
17,0-19,3	23012415	20,5	10,0	7,5	25,0	20,0	9,8	1,0	18	250	2.000

INFORMACIÓN TÉCNICA	
	MATERIAL STAINLESS STEEL W4 AISI 304 1.4301 (EN 10088-2:2005). STAINLESS STEEL AISI 301 INNER-RING
	ACABADO STAINLESS STEEL
	RESISTENCIA A LA CORROSIÓN 400 HOURS / INNER-RING 250 HOURS SALT SPRAY (ASTM B-117)

